

flexim® GF is a non-mastic, permanent, water resistant Gap Filler that stays flexible

Installation Guidelines

Recommended tools



1. Brush to clean out debris from gaps.
2. Compressed air spray to blow out dust from gaps.
3. Measuring tape or steel rule.
4. 50cm long straight edge.
5. Metal putty knife.
6. Plastic spatula. – for packing FLEXIM® GF into narrow/deep gaps or to trim off excess FLEXIM GF from wide gaps.
7. Wood spatula made from 4mm thick x 35mm batten for packing FLEXIM GF into 6 to 12mm gaps.
8. 12mm edging tool – for packing FLEXIM GF into wide/deep gaps or to trim off excess FLEXIM GF from gaps up to 12mm wide.

Other items: Safety goggles, chisel and hammer, Bucket filled with warm soapy water, cloth (towelling) scraper, masking tape.

IMPORTANT

Masking tape may be necessary where the surrounding brick or stonework is porous to prevent the FLEXIM GF from staining the surrounding surfaces.

Quantity Required

FLEXIM® GF comes in a block measuring 48cm x 10cm x 4cm (1920cm³) weighing approximately 0.8kg/1.76 lbs.

To calculate the amount of FLEXIM GF required...

Measure in centimetres (cm) the maximum Width of the gap to be filled.

Measure in centimetres (cm) the maximum Depth of the gap to be filled.

Measure in centimetres (cm) the maximum Length of the gap to be filled.

Calculation

Width x Depth x Length
= Cubic centimetres (cm³)
required for the job

One block of FLEXIM GF = 1920cm³

Example of minimum order requirement.

Nominal Width of gap = 2cm

Nominal Depth of gap = 4cm

Nominal Length of gap = 440cm

FLEXIM GF required to fill gap = 3520cm³

3520cm³ x 5% = 176 + 3520 = 3696

3696cm³ divided by 1920cm³ = 1.92

Round up to nearest blocks = 2 blocks

One FLEXIM GF block has sufficient material to fill the gap widths and lengths indicated below to a depth of 40mm. Strips are easily sliced from the block using a sharp, long blade knife and then tamped into the gap.

| Nominal gap width to be filled | Nominal cut strip width required | Approx. length of strip per block |
|--------------------------------|----------------------------------|-----------------------------------|
| mm | mm | metre |
| 6 | 8 | 6.0 |
| 8 | 10 | 4.8 |
| 10 | 12 | 4.0 |
| 12 | 14 | 3.4 |
| 14 | 16 | 3.0 |
| 16 | 18 | 2.7 |
| 18 | 20 | 2.4 |
| 20 | 22 | 2.2 |
| 22 | 24 | 2.0 |
| 24 | 26 | 1.8 |
| 26 | 28 | 1.7 |
| 28 | 30 | 1.6 |
| 30 | 32 | 1.5 |

Please note, FLEXIM GF cannot be used to reinstate the structural strength of a weight bearing component.

Use of masking tape to protect surrounding brick or stonework.

Where the surrounding brick or stonework is porous use masking tape either side of the gap to prevent the FLEXIM GF from staining the surrounding surfaces.

1 Rack out and clear the gap of debris.



2 Use a compressed air spray to remove dust from the gap



3 Measure the width, depth and length of the gap to ascertain the amount of FLEXIM GF to be used – see above.



4 Put on the protective gloves supplied and carefully remove the packaging from the FLEXIM GF block. Do not discard the packaging as it can be used to repack any FLEXIM GF that may be left over.



7 Using a straight edge and putty knife, cut a strip off the FLEXIM GF block. Refer above for recommended thicknesses.



8. Take a piece of FLEXIM GF from the strip sufficient to fill the gap.



9 Press the FLEXIM GF into the gap, keeping it clear of the surrounding brickwork – see note about the use of masking tape above.



10 According to the size of the gap being filled, Use a wood or plastic spatula or edging tool to pack the gap with FLEXIM GF.



11 Overfill the gap as indicated below



12 Using a putty knife carefully trim away excess FLEXIM GF.



13 Clean away any marking using a damp cloth soaked in soapy water taking care not to disturb the FLEXIM GF.



14 Finished job.



15 Close-up of filled gap.

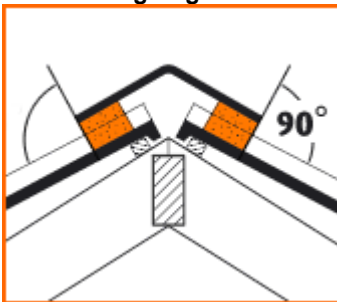


Leave the FLEXIM GF for a few days to allow its surface to "skin over". It can then be painted if desired.

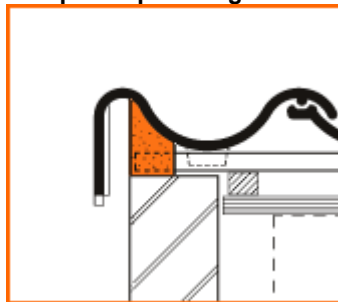
FLEXIM GF is available in Grey, Black, Brown and Terracotta/Red

Other applications for FLEXIM GF

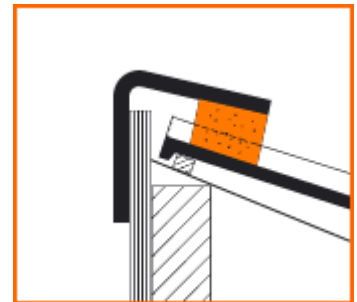
Fixing ridge tiles



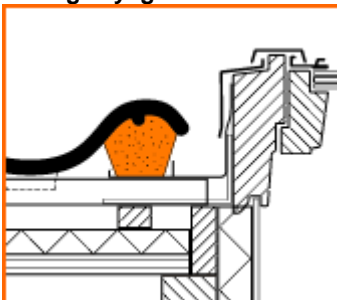
Gap fill hip tile edge detail



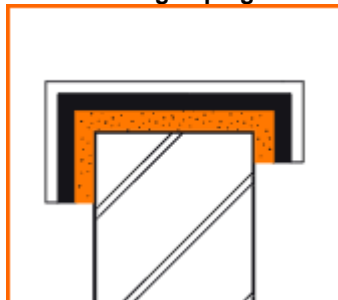
Gable detail



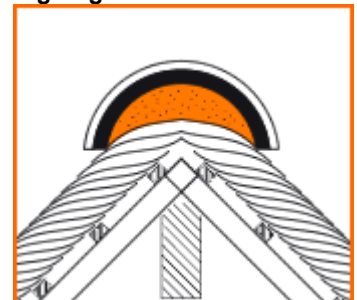
Sealing skylights to tiles/slates



Fixing coping



Fixing ridge tiles on a thatched roof



nationwide
build
shop limited www.nbs-home.co.uk

nbs3 FLEXIM GF 19.11.10

The texts, photographs and illustrations used in this publication have been reproduced with kind permission of Flexim International BV

This publication is issued subject to alteration or withdrawal without notice. The illustrations and specifications are not binding in detail. All offers are subject to the Company's current terms and conditions of sale, a copy of which is available on request.