

Purchase this product from [www.nbs-home.co.uk](http://www.nbs-home.co.uk)



Black Mountain – a natural choice timber frame homes

**Fitting wool is safer and faster**

When installing Black Mountain wool insulation there are no health and safety risks, hence there is no requirement to wear protective clothing –making fitting not just safer, but faster too.

**SAFETY NOTE:** Lofts in old buildings can be very dusty, so it is wise to wear a breathing mask and protective clothing when installing the product in confined areas. Where Black Mountain insulation is being installed over existing fibrous insulation it is essential a dust mask is worn to prevent inhalation of existing dust particles.

**It has a flexible profile for a snug fit**

Joists are placed at 400mm and 600mm centres. Black Mountain insulation is designed to fit snugly between joists, preventing any air gaps. And because it's designed to be slightly wider than the space, it will grip the joists or studs and not fall out during installation.

Black Mountain insulation rolls				Black Mountain insulation batts* Batts 1.2 metres long		
Thickness / Width mm	Length in roll metres	Area in roll m <sup>2</sup>	Order code	Thickness / Width mm	Area in batt m <sup>2</sup>	Order code
50 x 400	10	4.0	BMR504	50 x 400	0.48	BMB504
75 x 400	5	2.0	BMR754	75 x 400	0.48	BMB654
100 x 400	5	2.0	BMR1004	100 x 400	0.48	BMB1004
50 x 600	10	6.0	BMR506	50 x 600	0.72	BMB506
75 x 600	5	3.0	BMR756	75 x 600	0.72	BMB756
100 x 600	5	3.0	BMR1006	100 x 600	0.72	BMB1006

\* Batts are supplied in complete packs. 50 x 400 or 600 = 20 per pack  
75 x 400 or 600 = 13 per pack  
100 x 400 or 600 = 10 per pack



Black Mountain Insulation in a roll

**Wool insulation is stronger, less prone to damage**

Wool fibres are both strong and flexible allowing repeated handling without any damage. So you've little risk of compromising the material's performance during installation. This feature is especially important for building renovations occurring at a later date. A simple fixing process that's hard to get wrong Unlike rigid boards or older Man-made materials, Black Mountain insulation fits easily between timber joists. It also provides a tight seal with less effort because it's naturally flexible. As a result, air gaps are far less likely to appear or enlarge either through poor installation or movement over time.

**Can be installed after first fit**

When installing rigid boards in timber frame houses these must be fitted before the first fit services are installed. Black Mountain insulation can be fitted after first fit, allowing electricians and plumbers easier access and faster installation.

**A material that's naturally easy to work with.**

Wool insulation requires little cutting during insulation. Owing to the alignment of the wool fibres, it tears easily across its width in a straight line, allowing strips of the required length to be prepared quickly. It can also be cut and shaped with a strong pair of scissors for pieces going into small cavities. Man-made insulation, by contrast, typically requires far more laborious cutting and shaping and the considerable task of gap filling and taping.

**More flexible, with less waste**

With Black Mountain wool insulation, there will usually be no leftover material as off-cuts can be readily used elsewhere. It's more flexible too, as it can also be compressed and wedged into spaces without the need to cut exactly to the size required, expanding fill the entire space being insulated.

**Safe and easy to remove.**

Simple to refit, it's often necessary to remove insulation to access wiring, down-lighters or plumbing fixtures. But man-made insulation is often damaged or compressed due to brittleness and lack of flexibility. Black Mountain wool, by contrast, will always be easy and safe to remove and refit as required. And when renovating or extending, wool insulation can be easily removed and stored for later installation – lowering the costs of future work.

**Wool is a perfect partner to timber**

Because wool has the ability to regulate moisture and draw moisture away from the internal space of the home, it is the ideal insulation in timber frame constructions. The natural synergy between wood and wool delivers both energy efficiency and health and safety advantages.



Black Mountain Batt Insulation

### Wool is a perfect retro-fit

Wool insulation is faster to fit, and offers better insulation properties and protection for fitting in existing buildings. It can be used as a direct replacement for man-made insulation without the need to recalculate performance and is proven to last longer.



### Wool is an excellent dry lining insulation

When used between joists against an existing brick or stone wall, wool insulation is an effective insulator and is better able to regulate and manage the movement of moisture than the leading alternatives.

### Wool is suitable for areas of high humidity

Wool is a natural choice when insulating areas such as kitchens and showers. Its flexible form allows easier fitting. And its breathable design enables you to manage the extremes of moisture that occur in these spaces. In conjunction with an appropriate vapour barrier, wool insulation will offer better thermal performance in these locations.

### Wool is ideal for air-tight or breathable design

Wool insulation can operate as either an active layer within a breathable construction or as standard thermal insulation within a sealed space in vapour barrier designs. It makes economic sense too – with its greater longevity, higher acoustic rating and better natural profile as an insulator.

### Wool is suitable for pre-fabricated constructions

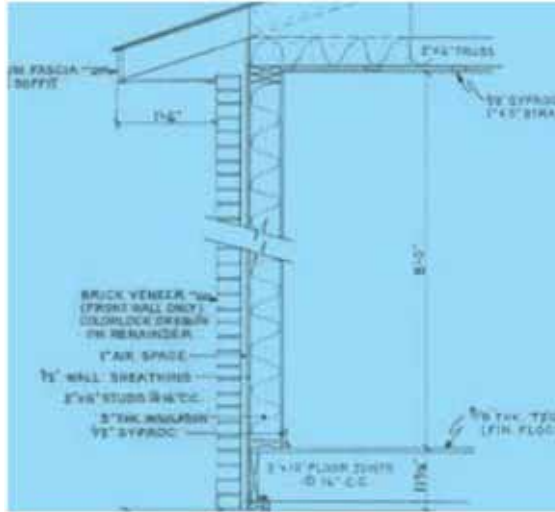
Off-site construction allows whole segments of the property to be built and delivered to the site for faster construction. Wool is durable, easy fitting and will not compress during transit, making it the ideal material for this use.

### Wool is recommended for retro-fit in historic buildings

Wool insulation is the preferred choice of the National Trust. It's easy to see why. Natural fibre insulation is good at absorbing damp. It's especially useful when a structure's high thermal mass would otherwise lead to a continued presence of moisture and dampness – a problem that man-made insulation can do nothing about.

### Black Mountain batts and rolls are delivered compressed to reduce transport costs

Black Mountain wool-based building insulation incorporates a polyester bulking agent to enable the insulation to be rolled and compressed whilst retaining the functional and environmental benefits associated with wool fibres such as breathability and carbon fixation. To ensure consistent thermal performance, it is important that insulation regains its thickness when unpacked or unrolled.



nbs3 BLACKMOUNTAIN 21.03.11

The texts, photographs and illustrations used in this publication have been reproduced with kind permission of Black Mountain Insulation Limited.

This publication is issued subject to alteration or withdrawal without notice. The illustrations and specifications are not binding in detail. All offers are subject to the Company's current terms and conditions of sale, a copy of which is available on request.

Black Mountain insulation products conveniently available from:

nationwide  
build  
shop